

## UNIFORM

Our uniform is comfortable, and convenient for learning and play!

Shirt, or blouse with long or short sleeves in light blue V-Neck jumper, cardigan or sweatshirt in navy blue. Black or grey school style shorts, trousers, pinafore dress or skirt. Gingham blue, or blue and white dresses may be worn in summer! Navy, white or grey tights

Black flat shoes (no boots) and of a suitable design for school.

## SCHOOL TIMINGS

8.50am – Gates Open

9.00am – School Starts

10.40am – Break time

12.00pm – Lunch time

1.00pm – Afternoon Lessons

3.20pm – End of School day

## OFSTED

Inspection dates: 25 and 26 May 2022

**Overall effectiveness** **Good**

The quality of education **Good**

Behaviour and attitudes **Good**

Personal development **Good**

Leadership and management **Good**

Early years provision **Good**

*"Pupils are very happy at this school. They understand and live up to the school's values of friendship, creativity and respect which underpin school life. In this safe environment, pupils develop independence and confidence" – Ofsted 2022*

## ABOUT US

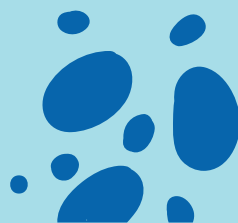
Ditchingham Primary Academy is a fun, warm creative environment. We have a Christian Ethos, but our approach is very much one of inclusivity. We are part of the Kingfisher Partnership which is part of the Diocese of Norwich Education Trust (DNEAT). We aim to ensure that all children enjoy school, and love learning. Through partnership with parents and the community we will help children reach their full potential and flourish. Some of our classes have combined year groups, but all classes have less than 30 pupils. Research shows that mixed Year Groups can help children thrive academically, allowing children to learn at their own pace. The younger pupils look up to their older peers for guidance and routine, and the older pupils look out for their younger equivalents with kindness and compassion. Every class has a Teaching Assistant!

## SCHOOL DINNERS

Nourish cook fresh school dinners on site daily. There is no charge to Key Stage 1 for school dinners. The charge for Key Stage 2 is £2.70 per day. Alternatively you can send a home packed lunch for your child. We enjoy seeing the variety of healthy options in home packed lunches.

## SCHOOL CLUBS

We have after school clubs on Mondays, Wednesdays, Thursdays. and Fridays. Reception children can join in every day except Thursday. We offer morning club from 8am daily for a small charge.



# DITCHINGHAM PRIMARY ACADEMY

## ADDITIONAL INFORMATION

Our peripatetic teacher visits us on Wednesdays to teach piano. Lessons can be booked via the school office.

Harvest, Christmas and Easter celebrations are all held at our local church for the whole school community.

We have a Friends Association, a group of people from the school community who fundraise for additional school equipment and activities.

Throughout the year we support the foodbank, as well as other local and national charities. We support the local church, and wider community.

Our playground is large, with play equipment and games markings. We also have a large school field, and a climbing frame!



01986 893 277

[ditchinghamoffice@kingfisherpartnership.org](mailto:ditchinghamoffice@kingfisherpartnership.org)

<https://ditchingham.dneat.org>



Although correct at the time of publication, it may be necessary to make changes during the school year.

